

MOVAX

SIDE-GRIP

SG-50

SG-50V

SG-60

SG-60V



VIBRATORY PILE DRIVERS
SHEET PILES - H-PILES - TUBULAR PILES - TIMBER PILES



Benefits of Movax SG-50/60 -series:

1. Interchangeable Side-Grip arm

- Suitable for wide range of piles
- Optimal gripping arms available for sheet piles, tubular piles, H-beams and many other profiles

2. Moving arms on both sides

- Easy pile handling and pitching
- Wide opening and synchronized movement speeds up the operation
- New jaw pad construction for pile handling (no 4th jaw)

3. Efficient driving and extraction

- Good geometry for delivering the driving energy to the pile
- Gripping force adjustable for different kind of piles

4. Advanced lubrication system

- Long continuous driving periods
- High capacity oil pump with separate oil storage keeps the temperature of vibrabox lower
- Mechanical direct drive of the lubrication pump to optimize hydraulic force for vibration

5. Simple and strong tilting and rotating mechanism

- Designed for durability and easy maintenance

6. Suitable for tracked and wheeled excavators and railroaders

- Reasonable low weight of SG models allows a stable use

Variable eccentric version SG-V

- Resonance free start and stop for piling in sensitive environment.
- Movax SG-V pilers are high frequency vibrators with variable eccentric moment. Disturbance of surrounding environment is minimized by operating at high frequency and avoiding an oscillation at natural frequencies of the soil and the surrounding structures.
- Fast change of the grip – no need to wait for the vibration motion to end before opening the jaws.



Side-grip arm options for SG



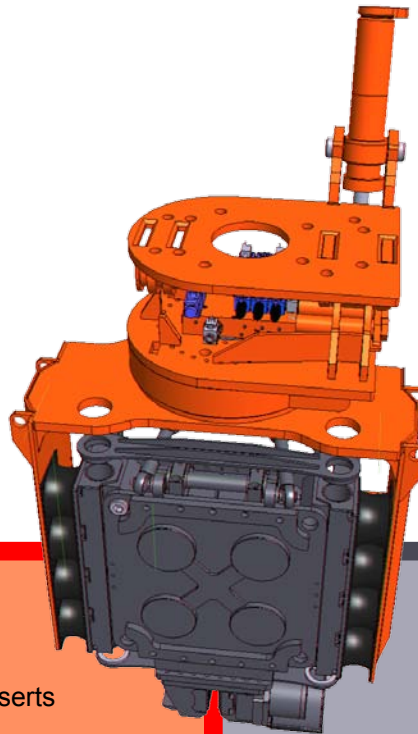
Jaw pad with mud removal grooves



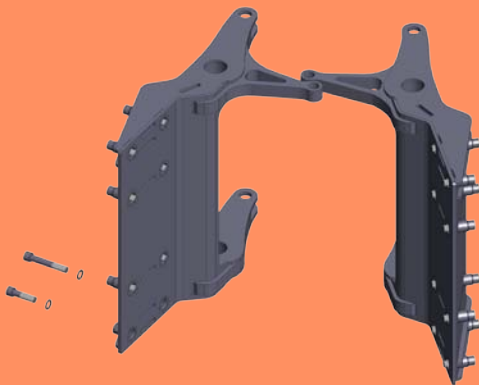
Standard jaw pad



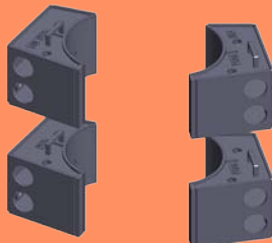
Tube jaw pad
D90-250 mm



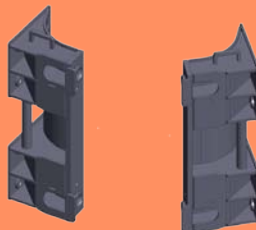
Modular arms with changeable inserts



Tubular pile clamps

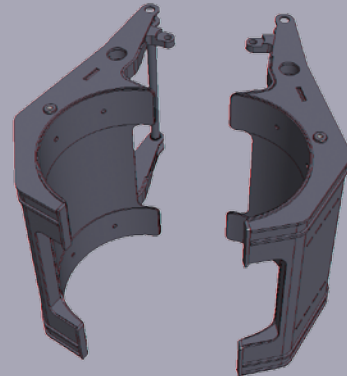


Sheet pile clamps

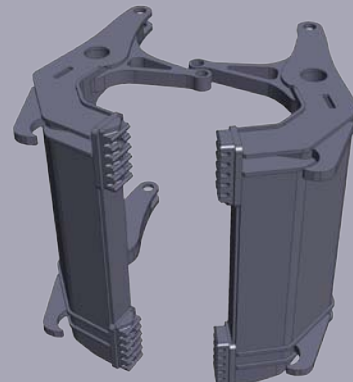


- Changing time ~1 hour
- Multipurpose clamping system with quickly changeable inserts.
- SG50: weight with these arms 2500-2580 kg
- SG60V: weight with these arms 2600-2680 kg

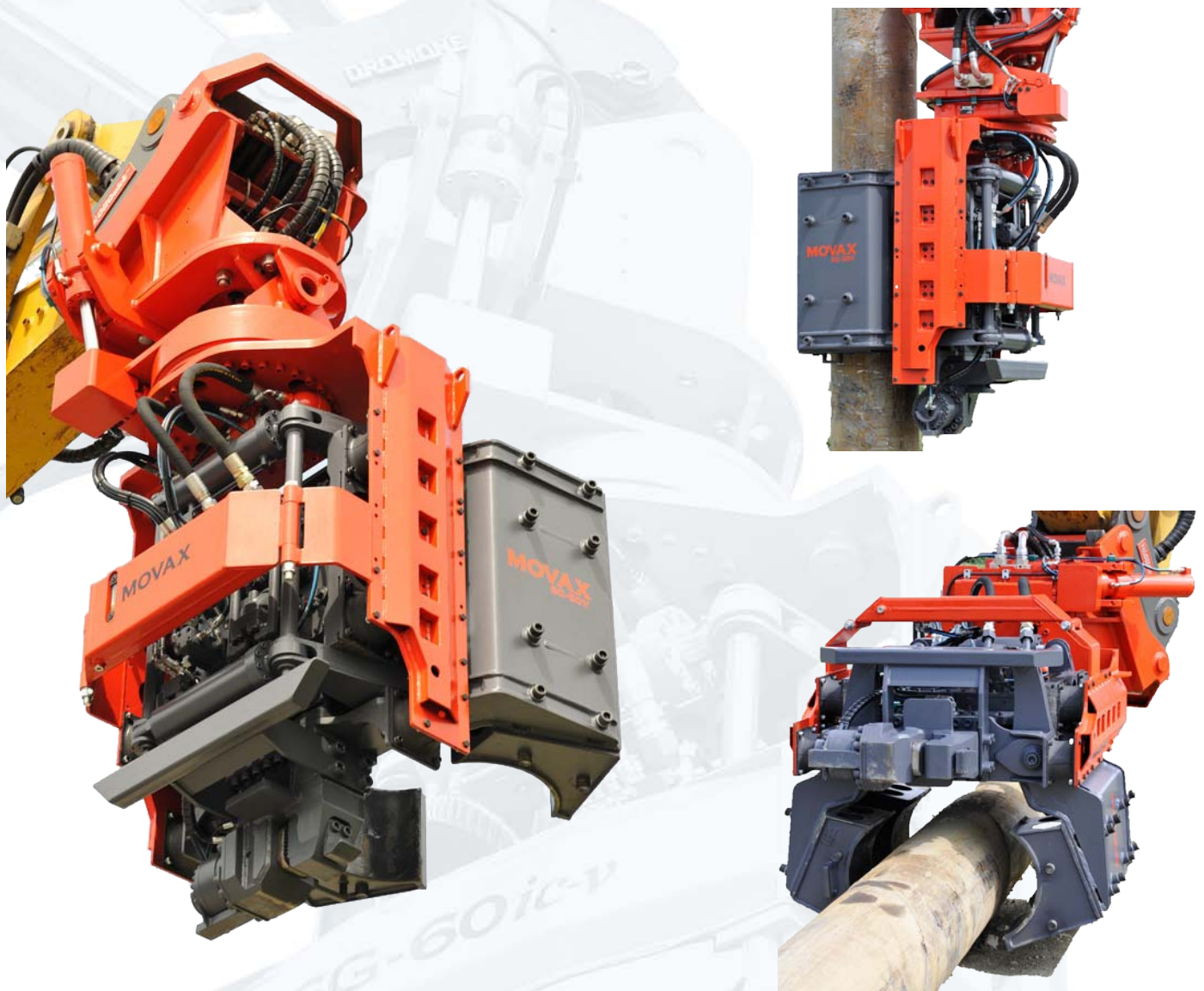
Special tubular pile arms



Special sheet pile arms



- Changing time ~ 4 to 6 hours
- Optimised efficient design for pile sections
- SG50: weight with these arms 2260-2315 kg
- SG60V: weight with these arms 2360-2415 kg



Suitable piles

Sheet piles	H-beams	Tubes
Width 400-1200 mm	Size H180-H500	Pipe clamps: (which are fitted to sheet pile jaws) Ø90 - Ø250 mm
“Depth” 265 mm		Tube reducer: (which are fitted to tube jaws) Ø193.7 - 610.0 mm
Weight max. 1400 kg	Weight max. 1400 kg	Weight max. 1400 kg
Length up to 18 m	Length up to 18 m	Length up to 18 m

Technical data

Piler type	SG-50	SG-50V	SG-60	SG-60V
Weight without adapter (kg)	2260 - 2680			
Height (mm)	2468			
Depth (mm)	1060 - 1383			
Width (mm)	1192			
Excavator class (ton)	23 - 30		28 - 38	
Max. return pressure (bar)	5			
Pressure settings (bar)	350			
Frequency (1/min)	2500 - 3000			
Centrifugal force (kN)	500		600	
Ground vibration	normal	low	normal	low
Resonance free start and stop	no	yes	no	yes
Driving method	vibra			
Swing / tilt angle (o)	360 / 30			

Movax Oy Ltd

Tölkimäentie 10, FI-13130 Hämeenlinna, Finland | www.movax.com, email: [marketing\(a\)movax.fi](mailto:marketing(a)movax.fi)