



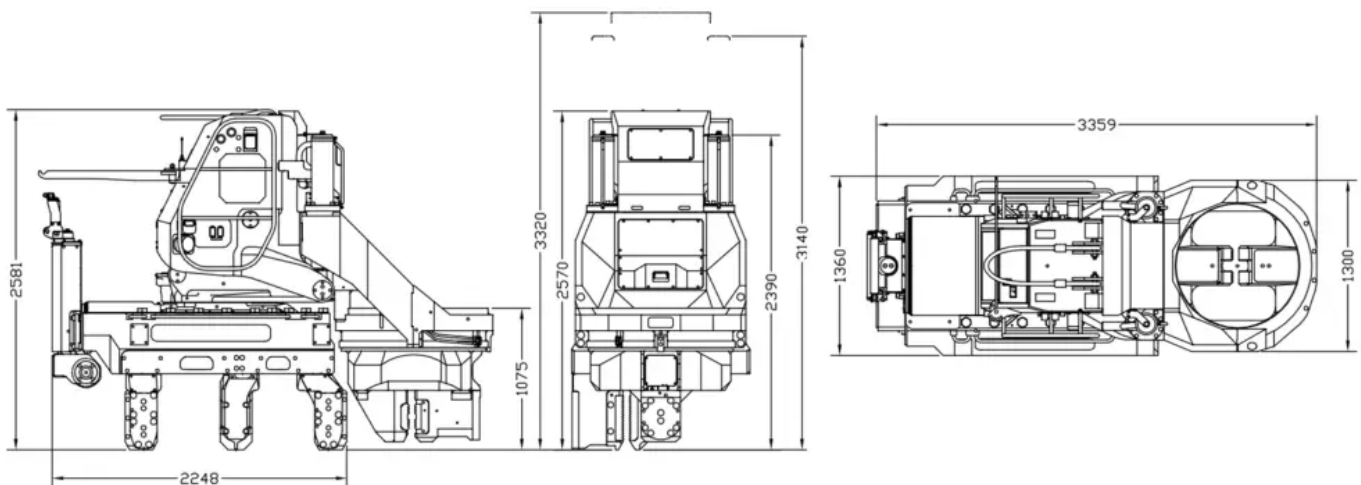
## Kowan ZU-100 Still Worker

### Features and benefits of the still worker

- Virtually noise and vibration free means installation of steel piles as close as 500mm to existing structures or services
- Exclusive mast tilt/self traveller ensures a more efficient safer operation
- Operates at ground level with no piling gates making it a very safe method of operation
- Wireless radio control providing a broad range of vision for the operator and a safe working environment
- Light and compact requiring only a small crane for pile pitching
- Ideal for height restricted sites

General information	
Maximum press-in force	1,000kN
Maximum extraction force	1,100kN
Stroke	750mm
Pressing in speed	3.0-36.0 m/min
Drawing out speed	2.4-28.0 m/min
Tilting device	+/-5 degrees
Mast rotation	180 degrees
Applicable sheet piles	'Z' 575-708 & 'U' 600-750
Oil/Greases	Biodegradable
Control system	Wireless radio control and cable remote control
Movement	Self-moving
Operating weight	12,260kg
Transport weight (including stand)	14,660kg

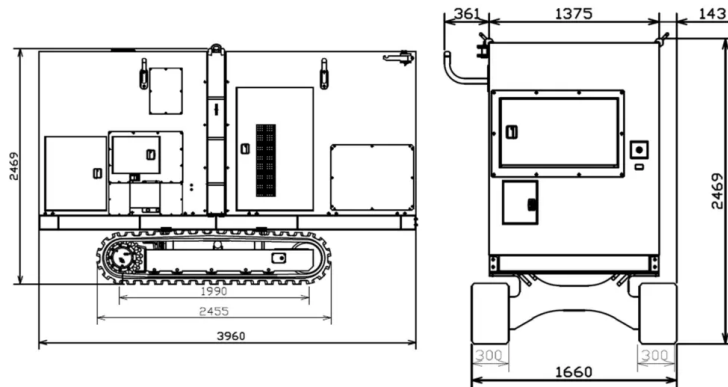
## Specifications of the Kowan ZU-100 Still Worker





## Specifications of the TE-200C4 Powerpack

TE-200C4 Powerpack	
Engine tier 3B	CAT C7.1
Fuel tank capacity	350lts
Hydraulic oil capacity	500lts
Operating weight	7,150kg
Rated output	168kW



## Specifications of the reaction stand

Reaction stand	
Height	462mm
Weight	2,400kg

